

P.E

- ◆ *Dance and Gymnastics*
- ◆ Taught by both Mrs Welch and Mr Attwood.
- ◆ The emphasis will be on linking different types of movement together.

English

- ◆ *Poetry*
- ◆ This will be linked to our History units
- ◆ This work will be based on the children writing a poem from the viewpoint of Florence Nightingale.
- ◆ The children will use their History knowledge to support their writing.
- ◆ This unit will enable the children to learn about how poems can sometimes be written in the shape of an object to help reflect their meaning or focus.
- ◆ Weekly homework.



History

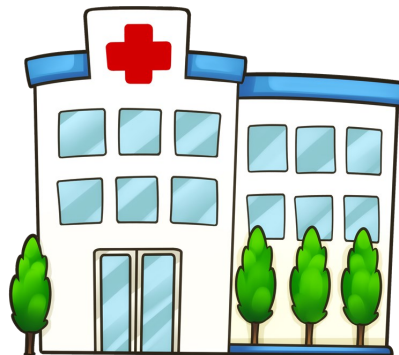
In history this term the children will be learning all about Florence Nightingale and how she helped shape the hospitals we know and depend on today. The children will even have a visit from some modern day nurses to compare the differences in health care from the 1800's to 2017!

Science

- ◆ Children will learn all about the human body and different ways to keep it healthy.
- ◆ We will look at the effects of exercise on the body
- ◆ We will also look at how to get a healthy balanced diet!



The lady with the lamp...



Year 2 Spring 1

Maths

- ◆ *Place value*
- ◆ *Addition and subtraction*
- ◆ *Multiplication*
- ◆ *Time*
- ◆ *Fractions*
- ◆ *Times tables*
- ◆ Weekly homework.



P.S.H.C.E

- ◆ *Being grateful*
- ◆ Drawing on our comparisons from the Hospitals in Florence Nightingales time and Hospitals in 2017.



Computing

- ◆ Typing and basic computer skills: saving and retrieving work.
- ◆ Using computer programs to gather data.
- ◆ Lessons on how to use the internet safely to research information.
- ◆ Internet safety.



Art

- ◆ *Art Project*
- ◆ Linking with their English work with shape poetry Year 2 will be creating portraits this term in the style of several artists.



R.E.

- ◆ *Places of worship*
- ◆ *Children will be learning all about the differences and similarities between religious Temples, Churches, Gudwaras and Mosques.*



MUSIC

- ◆ *Poetry + Environment*
- ◆ Weekly singing practice with Mr Adams with the whole school.

