

The background of the slide is a light mint green. It is decorated with watercolor illustrations of green leaves and gold wire. The leaves are in various shades of green, some with white highlights, and are arranged in clusters. The gold wire is thin and loops around the leaves. The text "Meet the Teacher" is centered in a white rounded rectangle.

# Meet the Teacher





# Miss Martin-Mills

Year 5 Teacher

KS2 Lead

Reading & Writing Lead

Music Lead



# The Year 5 Team



**Mrs Johnston - TA**



**Mrs Leedham - TA**



**Mrs Welch - P.E**



**Mr Attwood - TA/P.E**



**Miss Stanesby - TA**



**Mr Mansfield - Music**



# Our timetable

Time	Monday	Tuesday	Wednesday	Thursday	Friday
8:45 - 9:05	Fluent in 5/Spelling Shed	8:45 - 9:30 Arithmetic/Spelling Shed Reasoning Bubble	Fluent in 5/Spelling Shed	Fluent in 5/Spelling Shed	Homework/Spelling Test
9:05 - 10:10	Maths	9:30 P.E	Maths	English	English
10:10 - 10:30	Singing Assembly		Assembly	In the News	10:00 Celebration Assembly
10:30 - 10:45 : Break					
10:30 - 12:15	English	P.E	English	Maths	Maths
12:15 - 13:10 : Lunch					
13:10 - 13:25	Arithmetic	Fluent in 5	Arithmetic	Arithmetic	Arithmetic
13:25 - 14:15	Science	Maths	Music	Topic	Guided Reading
14:15 - 14:30 : Break					
14:30 - 15:20	Science	PSHE	Computing	Topic	Topic
15:20 - 15:30 : Story					
15:30 - Home time					





**What will my child  
be learning this  
year?**

# Maths



Place Value

Addition and Subtraction

Multiplication and Division

Fractions

Decimals and Percentages

Measure - Perimeter and Area

Graphs and Tables

Properties of Shapes

Position and Direction

Decimals

Negative Numbers

Measure - Converting numbers

Volume and Capacity



<https://shobnallprimaryschool.co.uk/mathematics/>

Check our school website  
Maths Curriculum Page for  
more information!



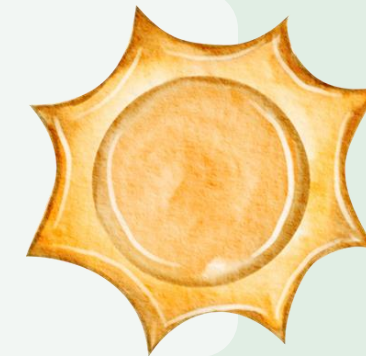


# Help at home..

Daily TTRockstars



Complete Homework



Use our Maths page on the School Website



# Writing

SPaG

Adverbs and Adverbials

Modal Verbs

Relative Clause

Brackets and dashes

Commas - to clarify & avoid ambiguity

Cohesion across paragraphs

Text Types

Explanations

Instructions

Letters

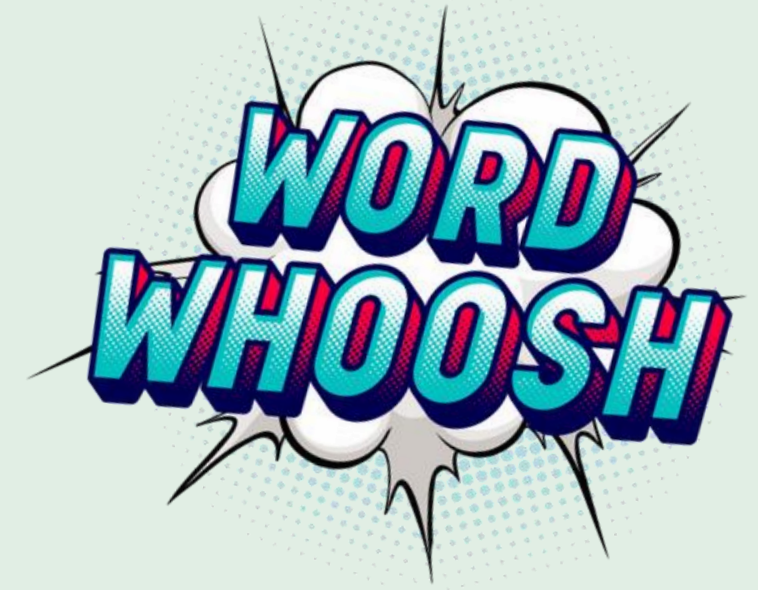
Narratives

Persuasive

Poetry

Recount

Reports



<https://shobnallprimaryschool.co.uk/english/>

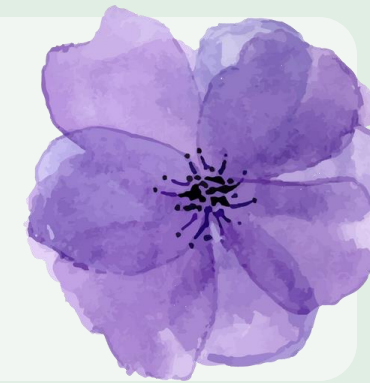
Check our school website  
English Curriculum Page for  
more information!



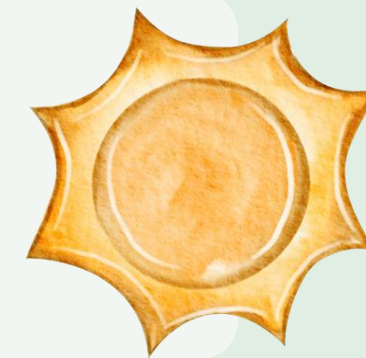


# Help at home..

Daily Reading



Practice spellings



Use our English page on the School  
Website



# Curriculum Pages

[Home](#)[About Us](#)[Key Info](#)[Curriculum](#)[Parents](#)[Children](#)

Find out more about what your child is learning and how you can support at home!

## Class Page

<https://shobnallprimaryschool.co.uk/year-5-class/>

[Home](#)[About Us](#)[Key Info](#)[Curriculum](#)[Parents](#)[Children](#)

Year 5 class page; class timetable, weekly homework overviews & curriculum overview





## PE



- PE will be on Tuesdays.
- Children will need to come to school in their kit
- An outdoor kit should consist of plain black or navy jogging bottoms, a plain black or navy sweatshirt and trainers.
- For health and safety, children who wear earrings should have these removed on PE days.
- Children will also be swimming this year - children to wear their costume/trunks under their P.E kit

Weekly children will receive;

- Either a piece of maths or English **homework on Fridays.**
- Reading – children are required to read **at least** three times a week and bring their reading diary to school every day to be signed.
- Spellings – 10 words a week that are **tested on a Friday.** These should be practised on Spelling Shed every evening for at least 10 minutes.
- Times Table Rockstars should also be used daily to help your children maintain their times table knowledge for at least 10 minutes.
- Homework should be **returned by Wednesday**



## Homework



[https://shobnallprimaryschool.co.uk/  
year-5-class/](https://shobnallprimaryschool.co.uk/year-5-class/)



# Lunch

- Children can either a school dinner (2 hot options, jacket potato or sandwich or bring their own packed lunch.
- You can view the school lunchtime menu on the school website
- Due to allergies we are a nut free school.

<https://shobnallprimaryschool.co.uk/school-dinners/>



## School Lunchtime Menu

Week 1 w/c 4th September 2023

Week 2 w/c 11th September 2023

Week 3 w/c 18th September 2023



Home

About Us

Key Info

Curriculum

Parents

Children



## School Dinners

SHOBNALL  
PRIMARY  
SCHOOL

# Snack



- Snacks can be ordered by your child daily, the cost of which will be charged to your ParentPay account.
- You can send your child with a snack, but this should be healthy. Please do not send your child with the following;
  - Crisps
  - Chocolate
  - High sugar-content foods



# Uniform

<https://shobnallprimaryschool.co.uk/school-uniform/>

In accordance with this policy and statutory guidance, the following items are acceptable for pupils in our school:

- White shirt
- White polo shirt
- Plain white blouse
- Grey trousers/shorts
- Grey skirt/pinafore
- Blue and white checked dress (summer dress)
- Black shoes & grey socks
- Royal blue/gold/red tie
- Royal blue jumper or cardigan

All children **must wear a school tie**, unless wearing a summer dress.





# Dates for your diary

Open Evening : Wednesday 15th November 2023

Year 5 Residential to Whitemoor Lakes: Wednesday 29th  
November - Friday 1st December 2023

Young Voices 2023 : Thursday 11th January 2024

Y5 Mothers Day Lunch : Thursday 7th March 2024

Y5 Trip to Hampton Court : Thursday 21st March 2024

Y5 Fathers Day Lunch : Thursday 13th June 2024

KS2 Brewhouse Performance : Thursday 4th July 2024

[https://shobnallprimaryschool.co.  
uk/diary-dates/](https://shobnallprimaryschool.co.uk/diary-dates/)







Thank  
you!